

## OPERATING INSTRUCTIONS



# Erie-Built A-Unit Locomotive

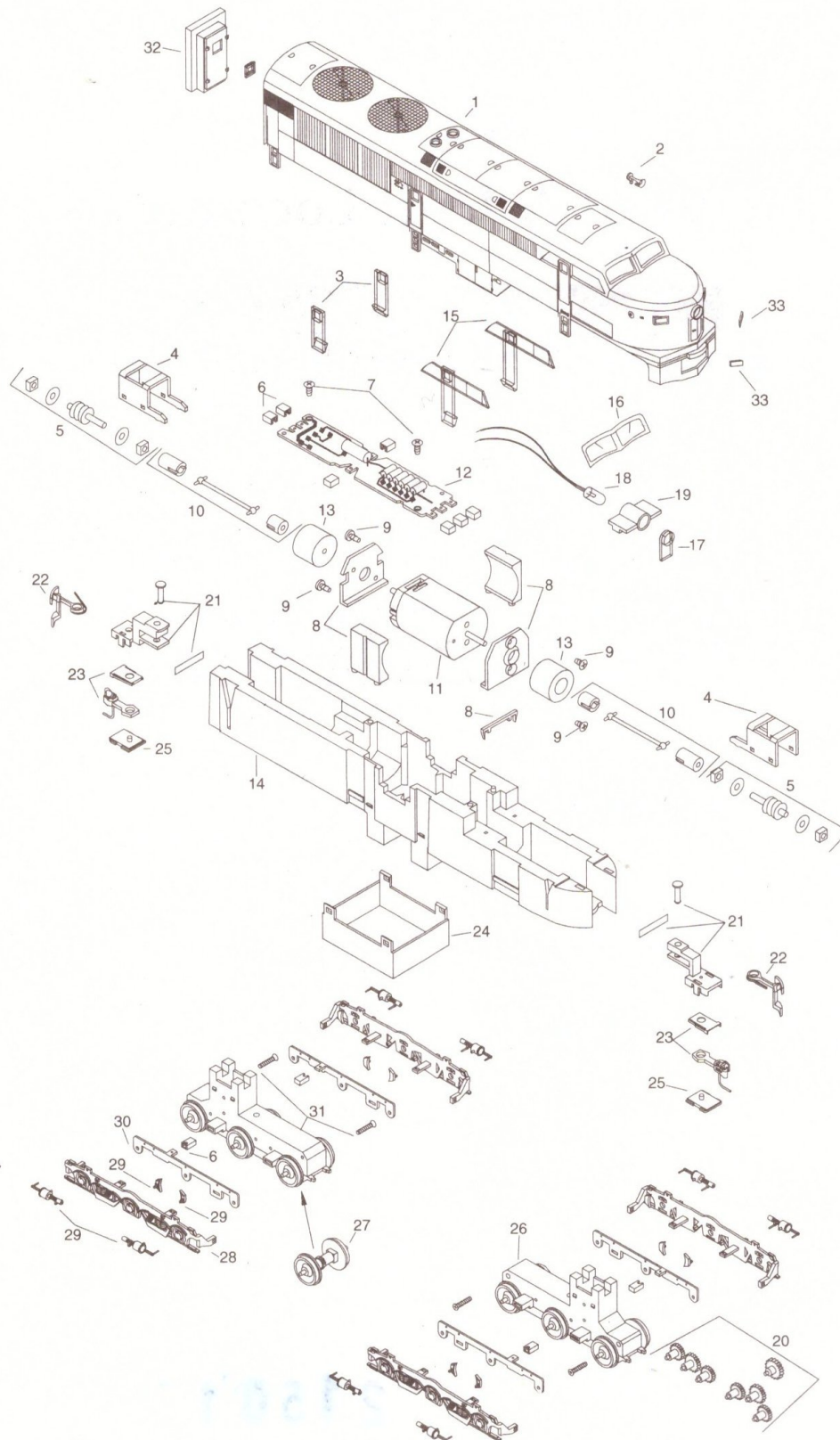


Congratulations! You have just purchased one of a series of the finest running, locomotives available today. Equipped with a totally new diecast chassis and a state of the art drive system, your Proto 1000 locomotive will give you years of enjoyment.

Your new **PROTO 1000** HO Scale **Erie-Built** diesel has been carefully assembled and tested before leaving our modern factory. Additionally, it has been engineered to provide virtually trouble-free service and operation.

21501

**FIG. 1A Exploded Parts Drawing Erie-Built A-Unit**



**PROTO 1000  
HO ERIE-BUILT PARTS LIST  
KEY # & DESCRIPTION**

1	Body	17	Plastic Headlight
2	Horns	18	Light Bulb
3	Side Windows	19	Light Bulb Housing
4	Worm Gear Cover	20	Gears
5	Worm Gear w/ Bushings	21	Coupler Box
6	PCB Clips	22	X2F Coupler
7	PCB Screws	23	Proto 2000 Coupler
8	Motor Mounts	24	Fuel Tank
9	Motor Screws	25	Coupler Box Cover
10	Universal Joint	26	Truck
11	Motor	27	Geared Wheel Set
12	PCB	28	Sideframe
13	Fly Wheel	29	Sideframe Details
14	Chassis	30	Contact Plate
15	Cab Windows	31	Truck Screws
16	Windshield	32	Diaphragm
		33	Number Board

**TO OBTAIN WARRANTY PARTS:**

1. Identify parts in drawings on page 2.
2. Locate part number above.
3. Use plain sheet of paper and specify part(s) by number.
4. Mail to address on page 4, Attention: Dock 2.
5. Allow 2-3 weeks for delivery.

**FOR WARRANTY INFORMATION AND  
ASSISTANCE**

**CALL TOLL-FREE:  
1-800-638-1470**

**Removing Shell For Maintenance**

You must first remove the front coupler. (Refer to diagram on page two) Note that part # 25 must be removed in order to remove the coupler. Turn the locomotive upside down and grasp with your thumbs, on both sides of the shell. Very gently pull the shell outward and turn the loco right side up. If the chassis does not separate, gently shake the loco until the shell and chassis separate.

**IMPORTANT: Retain package and all packing materials in case you need to ship locomotive for servicing.**



## LUBRICATION AND CLEANING

### *Frequency*

As with any precision mechanical equipment, occasional lubrication and maintenance is required for optimum performance. PROTO 1000 locomotives, with their precision-engineered reduction gears, motor and chassis need only occasional, careful lubrication and cleaning.

● Models used infrequently or not at all should not be lubricated more often than once a year. Excessive amounts of lubricant can migrate to the driver tires and cause reduced tractive force and grime on rail heads.

● Models which are run often and pull long consists on grades should be inspected and lubricated every two or three months.

### *Instructions*

**Bearing Areas.** A small patch of cloth held with tweezers should be used to clean bearing areas before lubrication. With the model upside down, place a drop of light oil at each wheel bearing. Do not over lubricate.

**Worm Gears.** By removing the body shell, the snap-on covers over the drive worms can be removed. Light grease should be applied to the worm gear with a toothpick.

**Idler Gears.** A drop or two of light oil can also be applied to the plastic idler gears below the worm gear. As they are made from slippery plastic, the gears require little maintenance.

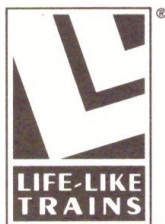
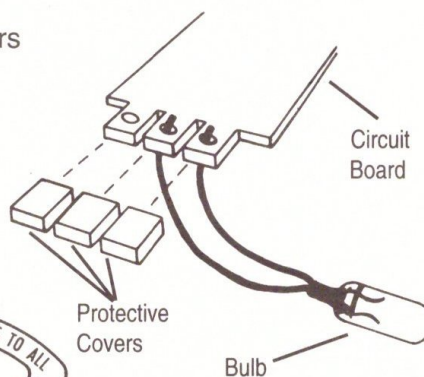
## BULB REPLACEMENT

Step 1. Remove black protective covers from circuit board.

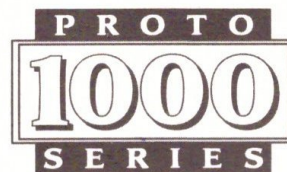
Step 2. Remove old wires from circuit board.

Step 3. Replace new wires in same position as old wires. No soldering is necessary.

Step 4. Replace black protective covers onto circuit board.



Life-Like Products, Inc.  
1600 Union Avenue  
Baltimore, MD 21211



RM 585126